

Report

<http://perfectforms.com/Report.php>

Reporting made easy with PerfectForms

Your application is in production - now it's time to develop a report and use the valuable data you've collected. PerfectForms reporting is powerful, easy-to-use and allows for instant drill down - all the way to the field that originally collected the data. It's so powerful and easy-to-use that we've had numerous requests from existing customers to enhance our reporting engine to provide for direct reporting and drill down of external datasources. Our mission really doesn't take us into the depths of legacy database reporting but the good news is that you can report on anything you collect with PerfectForms.

Our reporting capabilities feature numerous ways to display your data. We offer pie charts, bar charts, line charts, data grids, data lists, cross tabs, gauges and tables. You can link reports to applications for real time drill down on current workflows; you can include multiple datasources in a single report; you can build a PerfectForms reporting portal and report on anything and everything you collect. As one customer recently told us, "If you can imagine it, you can do it with PerfectForms".

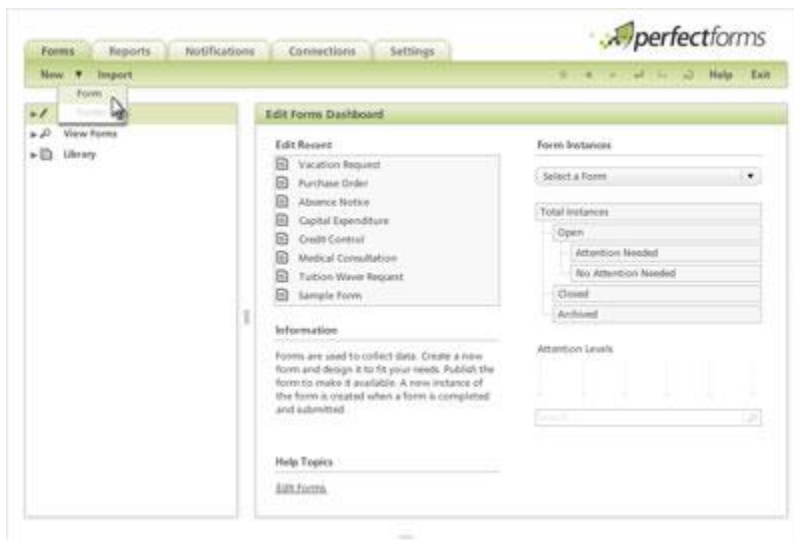
You can't build a report if you don't have an account so [sign-up](#) for a free 30-day trial now and get started. Either way you can still check out how easy it is to report on any of the data you collect with PerfectForms.

Getting started with the Report Designer

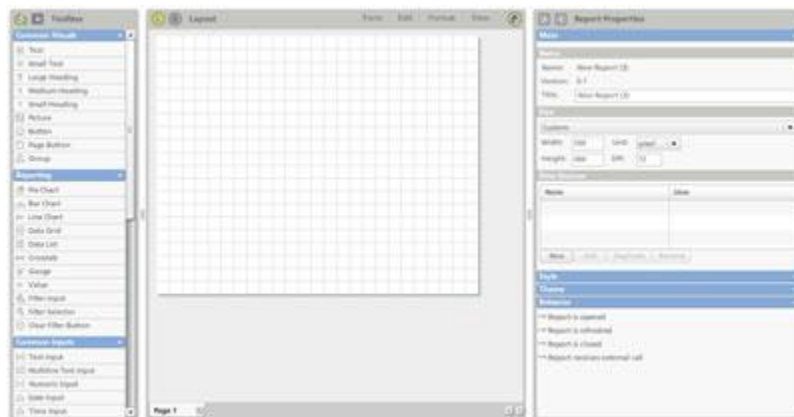
We have a really good [10-step Quickstart guide](#) that provides a quick and easy description of how you can [create a report](#). It covers everything you need to know to design and build your first report. We know many of you just don't like to read and that's okay too. You will find help buttons and helpful links

throughout the product.

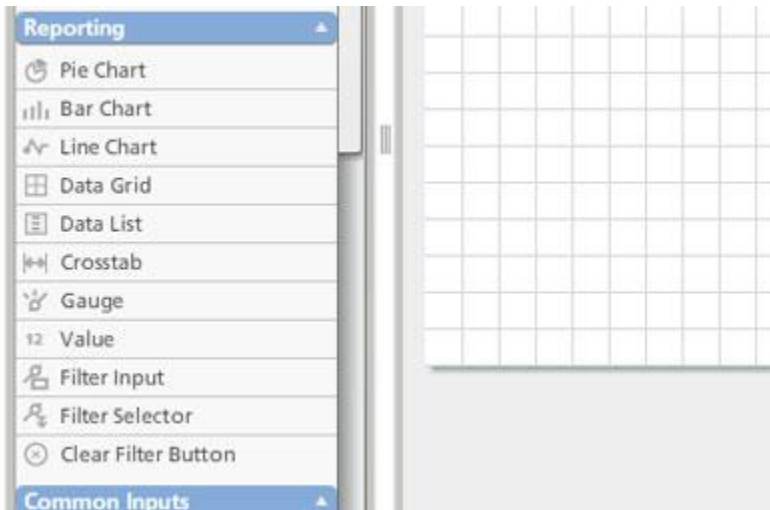
The Report Designer is identical in design to the Form Designer. To navigate to the Report Designer you can select Create a New Report from the bottom of the Edit group on the PerfectForms Home page.



The next page you will see is the Report Designer. It looks just like the Form Builder: the Toolbox objects are located in the left panel; the canvas is in the middle and the Properties Bar is located in the right panel.

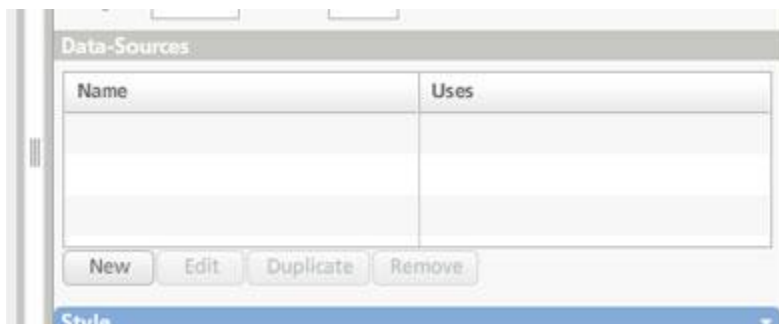


However, you will notice one significant difference in the Toolbox. These are the specific objects available to reports for data display.



Building your first report with PerfectForms

Once you are in Report Designer, you must first specify at least one datasource for the report. A datasource is a PerfectForms published application that provides the data to show on the report.



Select new then select the data source. Now you're ready to add the objects to display your data.

Drag and drop Reporting objects from the Toolbox onto the layout canvas. Set properties for the object you selected. The most commonly used property is the Field property in which you select the field and datasource that will supply the object with its reporting data. As with the Form Designer, you can preview your work before saving and publishing to ensure it's exactly the way you want it. Once you save it, it's ready to use. You can read more about creating reports [here](#).

Let us guess, now you want to report on data outside of PerfectForms?

Sorry, the answer is, "not today". The data must be in PerfectForms to use our reporting engine.

However, you can import data from your existing databases and then report on it.

Enjoy PerfectForms and let us know if we can help you in anyway.